

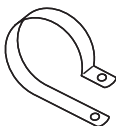
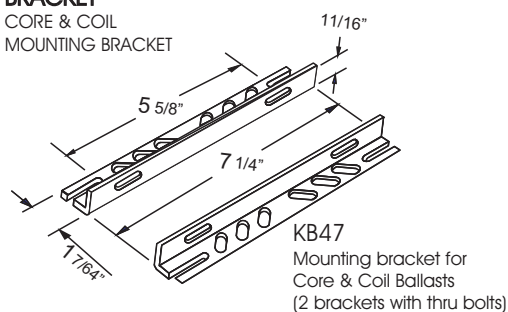
## CATALOG NUMBER: E-971-DD-SO400 FOR ONE 400 WATT, S51 HIGH PRESSURE SODIUM LAMP

Line Voltage	480V
Regulation	
Line Volts	+/- 10%
Line Watts	WITHIN TRAPEZOID
Frequency	60 Hz
Circuit Type	CWA
Power Factor (min)	90%
Insulation Class	H(180°)
Min. Ambient Starting Temp.	-40° F or -40° C

Line Voltage (Volts)	480
Line Current (Amps)	
Operating	1.00
Open Circuit	0.55
Starting	0.80
Input Watts (W)	464
Open Circuit Voltage (V)	190
Drop Out Voltage (V)	360
UL(1029) Bench Top Rise	C
Recommended Fuse (Amps)	3

HIGH POTENTIAL TEST (VOLTS)	
1 Minute	2000
2 Seconds	2500
Open Circuit Voltage Test(volts)	170-210
Short-Circuit Current Test (Amps)	
Secondary Current	6.2 - 7.0
Input Current (Amps)	0.70 - 0.80

### BRACKET CORE & COIL MOUNTING BRACKET

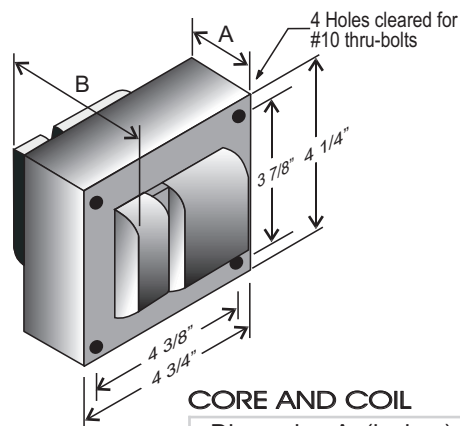


C-01  
MOUNTING CLIP for round case (Furnished as standard with B suffix ballast)



I-01  
MOUNTING CLIP for oval case (Furnished as standard with B suffix ballast)

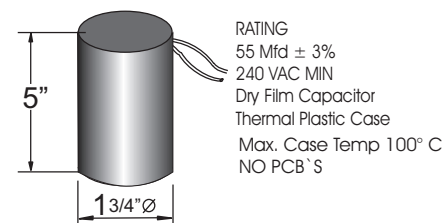
### 4 1/4" x 4 3/4" CORE



### CORE AND COIL

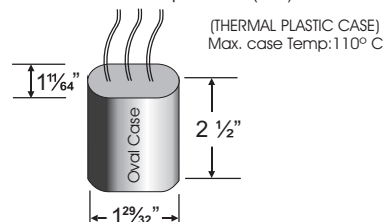
Dimension A (inches)	2.30
Dimension B (inches)	4.00
Weight (Lbs)	15.00
Lead Lengths (inches)	12

### CAPACITOR

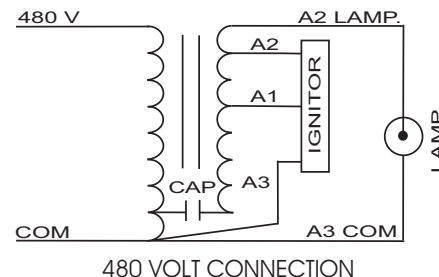


### IGNITOR 37-63-AS-6.9-N6

Ballast to Lamp Distance (BTL): 2 feet



### WIRING DIAGRAM



## ORDERING INFORMATION

\*\*\* Add proper suffix to catalog number when ordering as indicated below:

No suffix = Core and Coil Only

B= Core and Coil, and Bracket

C=Core and Coil, and Capacitor

BC=Core and Coil, Capacitor and Bracket

Data is based upon tests performed by Industrias Sola Basic in a controlled environment and representative of relative performance. Actual Performance can vary depending on operating conditions. Specifications are subject to change without notice.



ISO 9001



Made in Mexico by Industrias Sola Basic S.A de C.V.