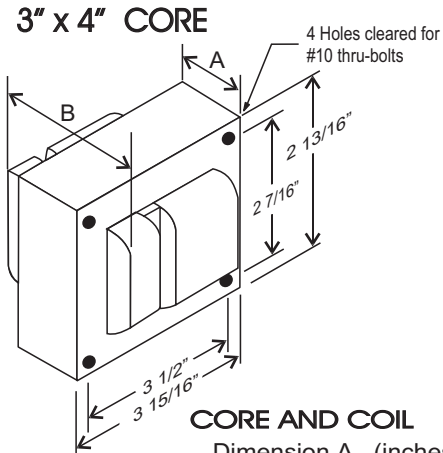


CATALOG NUMBER: E-971-FT-S070 FOR ONE 70 WATT, S62 HIGH PRESSURE SODIUM LAMP

Line Voltage	120/277V
Regulation	
Line Volts	+/- 10%
Lamp Watts	WITHIN TRAPEZOID
Frequency	60 Hz
Circuit Type	CWA
Power Factor (min)	90%
Insulation Class	H(180°)
Min. Ambient Starting Temp.	-40° F or -40° C

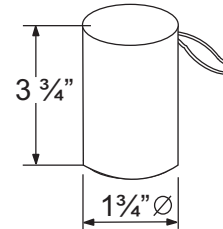
Line Voltage (Volts)	120	277
Line Current (Amps)		
Operating	0.90	0.40
Open Circuit	0.56	0.25
Starting	0.54	0.23
Input Watts (W)	100	100
Open Circuit Voltage (V)	108	108
Drop Out Voltage (V)	80	184
UL(1029) Bench Top Rise	A	A
Recommended Fuse (Amps)	3	1
HIGH POTENTIAL TEST (VOLTS)		
1 Minute	2000	
2 Seconds	2500	
Open Circuit Voltage Test(volts)	98-117	
Short-Circuit Current Test (Amps)		
Secondary Current	2.1 - 2.4	
Input Current (Amps)	0.39 - 0.43	0.16 - 0.21



CORE AND COIL

Dimension A (inches)	1.50
Dimension B (inches)	3.00
Weight (Lbs)	5.60
Lead Lengths (inches)	12

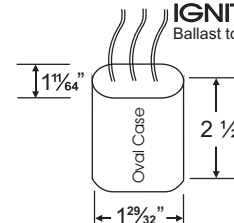
CAPACITOR



RATING
28 Mfd ± 3%
170 VAC MIN
Dry Film Capacitor
Thermal Plastic Case
Max. Case Temp 100° C
NO PCB'S

IGNITOR: 37-63-AS-9.1-N7

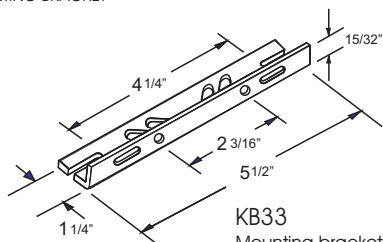
Ballast to Lamp Distance (BTL): 2 feet



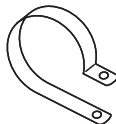
(THERMAL PLASTIC CASE)
Max. case Temp: 110° C

BRACKET

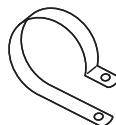
CORE & COIL
MOUNTING BRACKET



KB33
Mounting bracket for
Core & Coil Ballasts
(1 bracket with thru bolts)

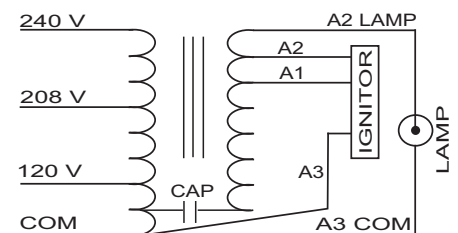


C-01
MOUNTING CLIP for round
case (Furnished as standard
with B suffix ballast)



I-01
MOUNTING CLIP for oval
case (Furnished as standard
with B suffix ballast)

WIRING DIAGRAM



120/208/240 VOLT CONNECTION

Data is based upon tests performed by Industrias Sola Basic in a controlled environment and representative of relative performance. Actual Performance can vary depending on operating conditions. Specifications are subject to change without notice.

ISO 9001:2000



SOLA CANADA LIGHTING & POWER

171 Ambassador Drive
Units 8 & 9
Mississauga, ON
L5T 2J1

Phone: 905-670-0746
Fax: 905-670-9689

www.solacanada.com

Made in Mexico by Industrias Sola Basic S.A de C.V.