

## CATALOG NUMBER: E-MCA0DD1500 FOR ONE 1500 WATT, M48 METAL HALIDE LAMP

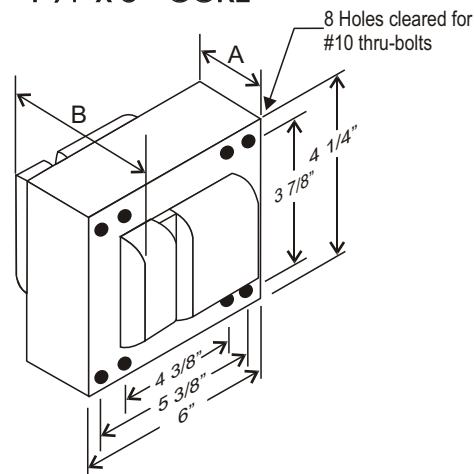
Line Voltage	480V
Regulation	
Line Volts	+/-10%
Line Watts	+/-10%
Frequency	60 Hz
Circuit Type	CWA
Power Factor (min)	90%
Insulation Class	H(180°)
Min. Ambient Starting Temp.	-20° F or -30° C

Line Voltage (Volts)	480
Line Current (Amps)	
Operating	3.50
Open Circuit	1.81
Starting	2.80
Input Watts (W)	1605
Open Circuit Voltage (V)	435
Drop Out Voltage (V)	320
UL(1029) Bench Top Rise	E
Recommended Fuse (Amps)	10

### HIGH POTENTIAL TEST (VOLTS)

1 Minute	2000
2 Seconds	2500
Open Circuit Voltage Test(volts)	400-490
Short-Circuit Current Test (Amps)	
Secondary Current	7.2 - 8.6
Input Current (Amps)	2.55 - 3.05

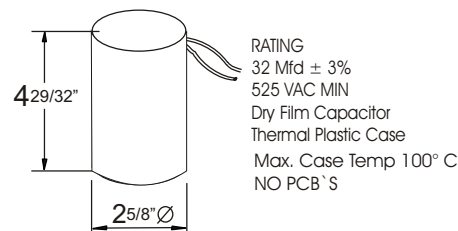
### 4 1/4" x 6" CORE



### CORE AND COIL

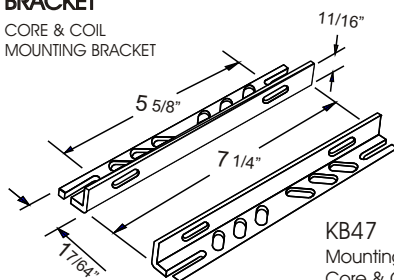
Dimension A (inches)	4.10
Dimension B (inches)	6.10
Weight (Lbs)	30.00
Lead Lengths (inches)	12

### CAPACITOR



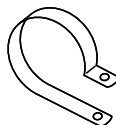
### BRACKET

CORE & COIL  
MOUNTING BRACKET



### KB47

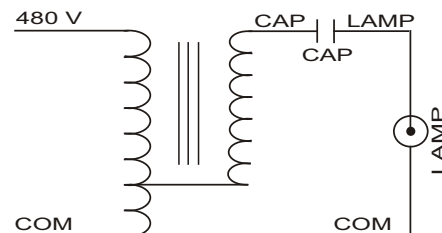
Mounting bracket for  
Core & Coil Ballasts  
(2 brackets with thru bolts)



### C-01

MOUNTING CLIP for round  
case (Furnished as standard  
with B suffix ballast)

### WIRING DIAGRAM



### 480 VOLT CONNECTION

Data is based upon tests performed by Industrias Sola Basic in a controlled environment and representative of relative performance. Actual Performance can vary depending on operating conditions. Specifications are subject to change without notice.



Certificate No. 006281



## SOLA CANADA

## LIGHTING & POWER

171 Ambassador Drive  
Units 8 & 9  
Mississauga, ON  
L5T 2J1

Phone: 905-670-0746  
Fax: 905-670-9689

www.solacanada.com

Made in Mexico by Industrias Sola Basic S.A de C.V.