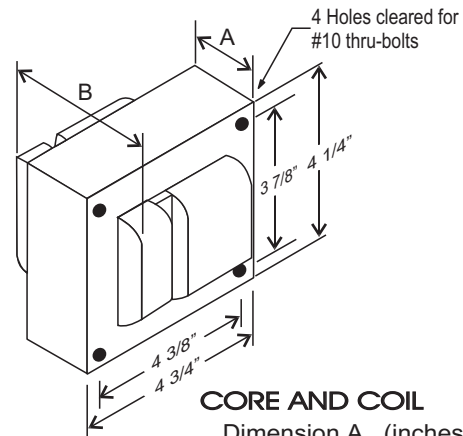


### CATALOG NUMBER: E-SCAFTJ200 FOR ONE 200 WATT, S66 HIGH PRESSURE SODIUM LAMP

Line Voltage	120/277/347
Regulation	
Line Volts	+/- 10%
Lamp Watts	WITHIN TRAPEZOID
Frequency	60 Hz
Circuit Type	CWA
Power Factor (min)	90%
Insulation Class	H(180°)
Min. Ambient Starting Temp.	-40° F or -40° C

Line Voltage (Volts)	120	277	347
Line Current (Amps)			
Operating	1.96	0.85	0.68
Open Circuit	1.30	0.55	0.45
Starting	1.30	0.55	0.45
Input Watts (W)	230	230	230
Open Circuit Voltage (V)	182	182	182
Drop Out Voltage (V)	75	175	220
UL(1029) Bench Top Rise	A	A	A
Recommended Fuse (Amps)	6	3	2
HIGH POTENTIAL TEST (VOLTS)			
1 Minute	2000		
2 Seconds	2500		
Open Circuit Voltage Test(volts)	165-205		
Short-Circuit Current Test (Amps)			
Secondary Current	1.1 -	0.48 -	0.38 -
Input Current (Amps)	1.39	0.60	0.48

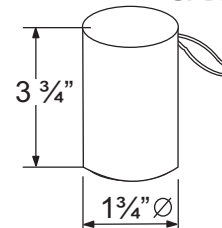
#### 4 1/4" x 4 3/4" CORE



#### CORE AND COIL

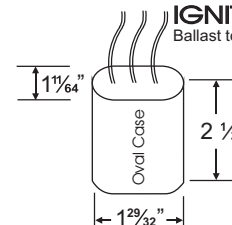
Dimension A (inches)	1.20
Dimension B (inches)	3.0
Weight (Lbs)	9.0
Lead Lengths (inches)	12

#### CAPACITOR



RATING  
28 Mfd ± 3%  
170 VAC MIN  
Dry Film Capacitor  
Thermal Plastic Case  
Max. Case Temp 100° C  
NO PCB'S

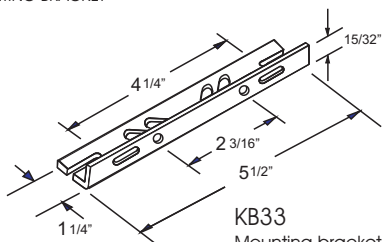
#### IGNITOR: 37-63-AS-6.9-N6 Ballast to Lamp Distance (BTL): 2 feet



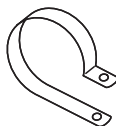
(THERMAL PLASTIC CASE)  
Max. case Temp: 110° C

#### BRACKET

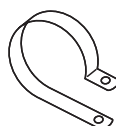
CORE & COIL  
MOUNTING BRACKET



**KB33**  
Mounting bracket for  
Core & Coil Ballasts  
(1 bracket with thru bolts)

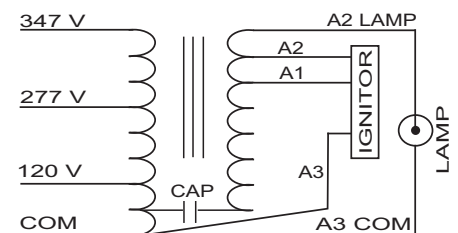


**C-01**  
MOUNTING CLIP for round  
case (Furnished as standard  
with B suffix ballast)



**I-01**  
MOUNTING CLIP for oval  
case (Furnished as standard  
with B suffix ballast)

#### WIRING DIAGRAM



120/277/347 VOLT CONNECTION

Data is based upon tests performed by Industrias Sola Basic in a controlled environment and representative of relative performance. Actual Performance can vary depending on operating conditions. Specifications are subject to change without notice.

ISO 9001:2000



## SOLA CANADA LIGHTING & POWER

171 Ambassador Drive  
Units 8 & 9  
Mississauga, ON  
L5T 2J1

Phone: 905-670-0746  
Fax: 905-670-9689

www.solacanada.com

Made in Mexico by Industrias Sola Basic S.A de C.V.