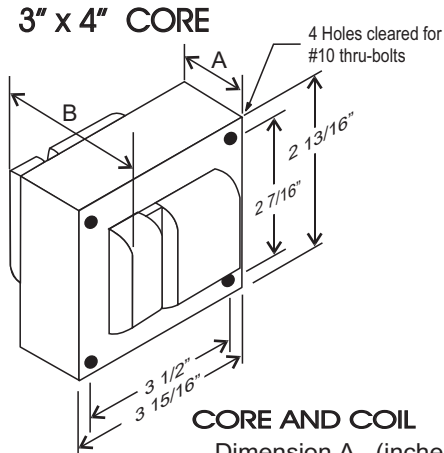


### CATALOG NUMBER: E-SIAFRM100 FOR ONE 100 WATT, S54 HIGH PRESSURE SODIUM LAMP

Line Voltage	120/208/240V
Regulation	
Line Volts	+/- 10%
Lamp Watts	WITHIN TRAPEZOID
Frequency	60 Hz
Circuit Type	CWI
Power Factor (min)	90%
Insulation Class	H(180°)
Min. Ambient Starting Temp.	-40° F or -40° C

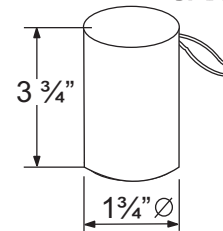
Line Voltage (Volts)	120	208	240
Line Current (Amps)			
Operating	1.20	0.70	0.60
Open Circuit	0.72	0.41	0.37
Starting	0.64	0.37	0.32
Input Watts (W)	130	130	130
Open Circuit Voltage (V)	109	109	109
Drop Out Voltage (V)	80	130	150
UL(1029) Bench Top Rise	B	B	A
Recommended Fuse (Amps)	3	2	2
HIGH POTENTIAL TEST (VOLTS)			
1 Minute	2000		
2 Seconds	2500		
Open Circuit Voltage Test(volts)	100-125		
Short-Circuit Current Test (Amps)			
Secondary Current	2.75-3.2		
Input Current (Amps)	0.40 - 0.55	0.23 - 0.30	0.20 - 0.26



#### CORE AND COIL

Dimension A (inches)	2.10
Dimension B (inches)	3.50
Weight (Lbs)	7.45
Lead Lengths (inches)	12

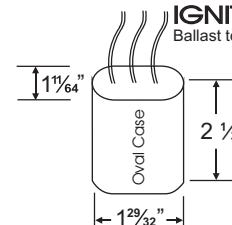
#### CAPACITOR



RATING  
34 Mfd ± 3%  
170 VAC MIN  
Dry Film Capacitor  
Thermal Plastic Case  
Max. Case Temp 100° C  
NO PCB'S

#### IGNITOR: 37-63-AS-9.1-N7

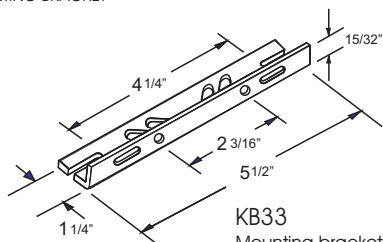
Ballast to Lamp Distance (BTL): 2 feet



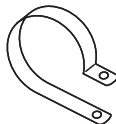
(THERMAL PLASTIC CASE)  
Max. case Temp: 110° C

#### BRACKET

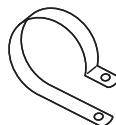
CORE & COIL  
MOUNTING BRACKET



KB33  
Mounting bracket for  
Core & Coil Ballasts  
(1 bracket with thru bolts)

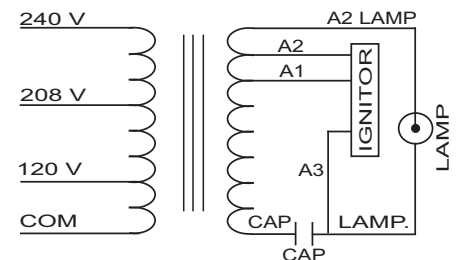


C-01  
MOUNTING CLIP for round  
case (Furnished as standard  
with B suffix ballast)



I-01  
MOUNTING CLIP for oval  
case (Furnished as standard  
with B suffix ballast)

#### WIRING DIAGRAM



120/208/240 VOLT CONNECTION

Data is based upon tests performed by Industrias Sola Basic in a controlled environment and representative of relative performance. Actual Performance can vary depending on operating conditions. Specifications are subject to change without notice.

ISO 9001:2000



## SOLA CANADA LIGHTING & POWER

171 Ambassador Drive  
Units 8 & 9  
Mississauga, ON  
L5T 2J1

Phone: 905-670-0746  
Fax: 905-670-9689

www.solacanada.com

Made in Mexico by Industrias Sola Basic S.A de C.V.