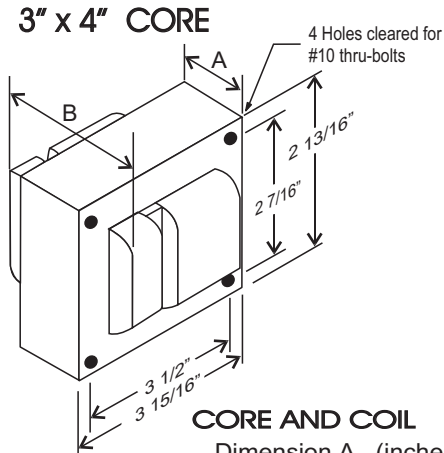


CATALOG NUMBER: E-SIAFRMJ70 FOR ONE 70 WATT, S62 HIGH PRESSURE SODIUM LAMP

Line Voltage	120/208/240/347V
Regulation	
Line Volts	+/- 10%
Lamp Watts	WITHIN TRAPEZOID
Frequency	60 Hz
Circuit Type	CWI
Power Factor (min)	90%
Insulation Class	H(180°)
Min. Ambient Starting Temp.	-40° F or -40° C

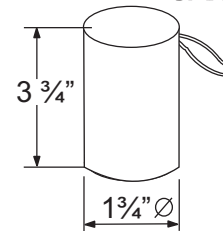
Line Voltage (Volts)	120	208	240	347
Line Current (Amps)				
Operating	0.87	0.50	0.44	0.30
Open Circuit	0.49	0.28	0.24	0.17
Starting	0.49	0.28	0.24	0.17
Input Watts (W)	95	95	95	95
Open Circuit Voltage (V)	110	110	110	110
Drop Out Voltage (V)	80	140	160	230
UL(1029) Bench Top Rise	A	A	A	A
Recommended Fuse (Amps)	3	2	2	1
HIGH POTENTIAL TEST (VOLTS)				
1 Minute	2000			
2 Seconds	2500			
Open Circuit Voltage Test(volts)	100-125			
Short-Circuit Current Test (Amps)				
Secondary Current	2.0 - 2.2			
Input Current (Amps)	0.33 - 0.42	0.18 - 0.24	0.16 - 0.20	0.11 - 0.14



CORE AND COIL

Dimension A (inches)	1.78
Dimension B (inches)	3.10
Weight (Lbs)	6.20
Lead Lengths (inches)	12

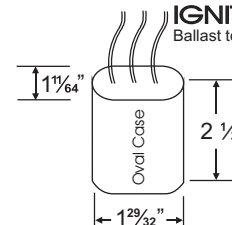
CAPACITOR



RATING
24 Mfd ± 3%
300 VAC MIN
Dry Film Capacitor
Thermal Plastic Case
Max. Case Temp 100° C
NO PCB'S

IGNITOR: 37-63-AS-9.1-N7

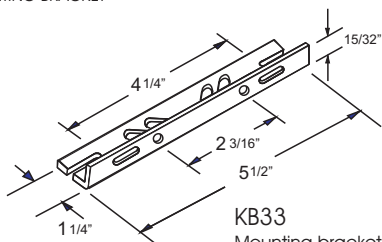
Ballast to Lamp Distance (BTL): 2 feet



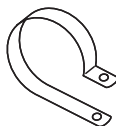
(THERMAL PLASTIC CASE)
Max. case Temp: 110° C

BRACKET

CORE & COIL
MOUNTING BRACKET

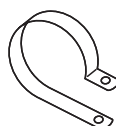


KB33
Mounting bracket for
Core & Coil Ballasts
(1 bracket with thru bolts)



C-01

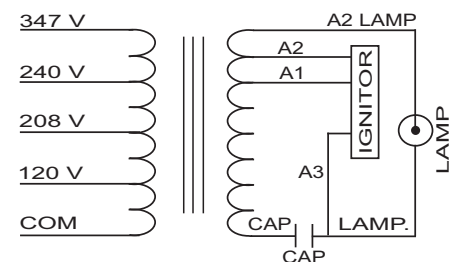
MOUNTING CLIP for round case (Furnished as standard with B suffix ballast)



I-01

MOUNTING CLIP for oval case (Furnished as standard with B suffix ballast)

WIRING DIAGRAM



120/208/240/347 VOLT CONNECTION

Data is based upon tests performed by Industrias Sola Basic in a controlled environment and representative of relative performance. Actual Performance can vary depending on operating conditions. Specifications are subject to change without notice.

ISO 9001:2000



SOLA CANADA LIGHTING & POWER

171 Ambassador Drive
Units 8 & 9
Mississauga, ON
L5T 2J1

Phone: 905-670-0746
Fax: 905-670-9689

www.solacanada.com

Made in Mexico by Industrias Sola Basic S.A de C.V.