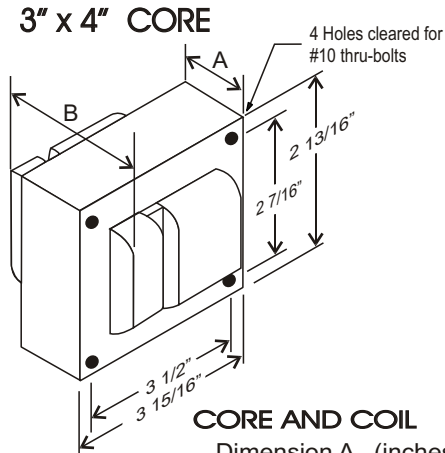


CATALOG NUMBER: E-SIAJDDZ70 FOR ONE 70 WATT, S62 HIGH PRESSURE SODIUM LAMP

| | |
|-----------------------------|------------------|
| Line Voltage | 347/480/600V |
| Regulation | |
| Line Volts | +/- 10% |
| Lamp Watts | WITHIN TRAPEZOID |
| Frequency | 60 Hz |
| Circuit Type | CWI |
| Power Factor (min) | 90% |
| Insulation Class | H(180°) |
| Min. Ambient Starting Temp. | -40° F or -40° C |

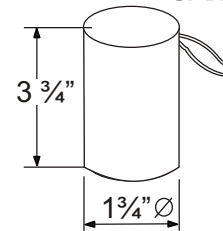
| | | | |
|-----------------------------------|-----------|----------------------|------|
| Line Voltage (Volts) | 347 | 480 | 600 |
| Line Current (Amps) | | | |
| Operating | 0.30 | 0.22 | 0.18 |
| Open Circuit | 0.20 | 0.14 | 0.12 |
| Starting | 0.20 | 0.14 | 0.12 |
| Input Watts (W) | 95 | 95 | 95 |
| Open Circuit Voltage (V) | 110 | 110 | 110 |
| Drop Out Voltage (V) | 230 | 320 | 400 |
| UL(1029) Bench Top Rise | C | B | B |
| Recommended Fuse (Amps) | 1 | 1 | 1 |
| HIGH POTENTIAL TEST (VOLTS) | | | |
| 1 Minute | 2200 | | |
| 2 Seconds | 2650 | | |
| Open Circuit Voltage Test(volts) | 100-125 | | |
| Short-Circuit Current Test (Amps) | | | |
| Secondary Current | 2.0 - 2.2 | | |
| Input Current (Amps) | | 0.12 - 0.09 - 0.07 - | |
| | | 0.16 0.12 0.09 | |



CORE AND COIL

| | |
|-----------------------|------|
| Dimension A (inches) | 1.60 |
| Dimension B (inches) | 2.90 |
| Weight (Lbs) | 5.80 |
| Lead Lengths (inches) | 12 |

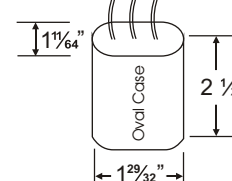
CAPACITOR



RATING
24 Mfd ± 3%
300 VAC MIN
Dry Film Capacitor
Thermal Plastic Case
Max. Case Temp 100° C
NO PCB'S

IGNITOR: 37-63-AS-9.1-N7

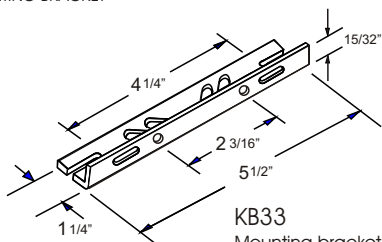
Ballast to Lamp Distance (BTL): 2 feet



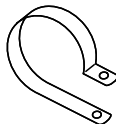
(THERMAL PLASTIC CASE)
Max. case Temp: 110° C

BRACKET

CORE & COIL
MOUNTING BRACKET

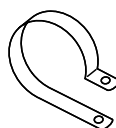


KB33
Mounting bracket for
Core & Coil Ballasts
(1 bracket with thru bolts)



C-01

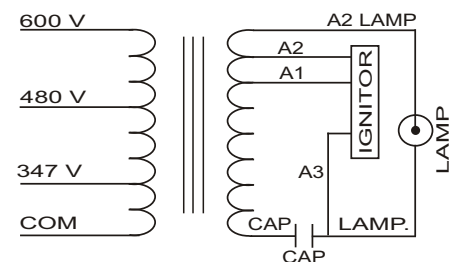
MOUNTING CLIP for round case (Furnished as standard with B suffix ballast)



I-01

MOUNTING CLIP for oval case (Furnished as standard with B suffix ballast)

WIRING DIAGRAM



347/480/600 VOLT CONNECTION

Data is based upon tests performed by Industrias Sola Basic in a controlled environment and representative of relative performance. Actual Performance can vary depending on operating conditions. Specifications are subject to change without notice.



SOLA CANADA

LIGHTING & POWER

171 Ambassador Drive
Units 8 & 9
Mississauga, ON
L5T 2J1

Phone: 905-670-0746
Fax: 905-670-9689

www.solacanada.com

Made in Mexico by Industrias Sola Basic S.A de C.V.